

A
guide to
food & dining
in Shellharbour



www.tourismshellharbour.com.au

A guide to food & dining in Shellharbour

For a copy of the
FREE Visitors Guide or for further
visitor information contact...



Tourism Shellharbour

Shellharbour Visitor Information Centre Lamerton House,
Lamerton Crescent, Shellharbour City Centre NSW 2529

Phone: 1300 65 6169 or 02 4221 6169

Fax: 02 4221 6077

Email: tourism@shellharbour.nsw.gov.au

Web: www.tourismshellharbour.com.au



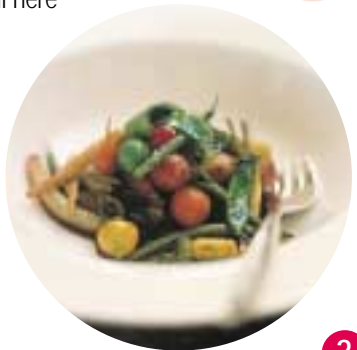
will take you there!

Whilst every effort is made to ensure accuracy of this Guide, Tourism Shellharbour accepts no responsibility for errors, omissions or price changes of any kind. All material is subject to copyright. Published October 2004



Shellharbour prides itself on the abundance of restaurants, cafes, pubs, clubs and eateries that are available to tempt your tastebuds.

Dinner or breakfast, lunch or brunch...
you can experience it all here
in Shellharbour.



Key

-  Phone number
-  Fax number
-  Email address
-  Website
-  Cuisine Style
-  Hours/Days of operation
-  Meal Prices
-  Seating Capacity
-  Licensed premises
-  BYO (Bring Your Own alcoholic beverages)
-  Reservation Required
-  Takeaway Available
-  Delivery Available
-  Private Functions
-  Entire Facility Booking
-  Wheelchair Access Amenities
-  Highchair Available
-  Parking Available
-  Payment Accepted by these Cards

Addison's Restaurant & Function Lounge

25 Addison Street, Shellharbour Village 2529

Illawarra seafood restaurant of the year 2004 and 2003, specialising in modern Australian innovative seafood cuisine, also features beef, lamb, chicken and vegetarian.

P 02 4297 5566

F 02 4297 5666

E reservations@addisons.com.au

W www.addisonsseafood.com.au

C Seafood

H 7 days (Autumn and Winter closed Sunday nights only) Lunch and Dinner

\$ Entrees start from: \$14.00

Mains start from: \$24.00

Desserts start from: \$10.00

S 140 Seats



Aronda's 'Romantic Old Style Cuisine'

28a Mary Street, Shellharbour Village 2529

Aronda's Restaurant makes your dining experience memorable with its beautiful décor, traditional old style meals with a touch of old world charm.

P 02 4295 7705 **F** 02 4296 9126

C Traditional old style

H 7 days 7am to 2.30 pm, 6pm to close
Breakfast, Lunch and Dinner

\$ Entrees start from: \$5.00
Mains start from: \$19.00
Desserts start from: \$7.50



Branches Restaurant

Cnr Shellharbour Rd & Ocean Beach Drv, Shellharbour 2529

Offering two and three course Table d'Hote menu which changes seasonally and excellent a'la carte and junior menus complimented with our extensive beverage list.

P 02 4297 1323

F 02 4297 1040

E branches@shellharbourresort.com.au

W www.shellharbourresort.com.au

C Seafood, Italian & Mediterranean

H Monday to Saturday from 6pm
Breakfast (Group bookings only)

\$ Entrees start from: \$7.50
Mains start from: \$22.00
Desserts start from: \$7.00

S 150 Seats



Cake Biz

2/2 Memorial Drive, Shellharbour City 2529

All products baked and all coffee roasted on premises, coffee and cake deal, birthday and celebration cakes a specialty. Gateau's, mud cakes and flans, kids cakes, cheesecakes ice-cream cakes quiches and pies.

P 02 4295 3599 **F** 02 4295 3588

W www.cakebiz.com.au

C Retail cake shop

H 7 days, 9am - 7pm Monday - Saturday, 9am to 5pm Sunday. Breakfast, Lunch and Dinner

\$ Desserts start from: \$2.00





Chilis serves a mix of favourites including tasty Fajita Trios, Buffalo Chicken Wraps, Flame-Grilled Ribeye steaks, mouth watering grilled baby back ribs, Big Mouth Burgers and refreshing Margaritas like our famous Blue Pacific Margarita. **Chilis. Fun, Fresh, Flavourful!**

Like No Place Else.

Cnr New Lake Entrance Road and Minda Cres, Shellharbour City Centre.



P 02 4295 1333

E shellharbour@chilis.com.au

W www.chilis.com.au

H Open for lunch and dinner from 11am, 7 days a week

T Takeaway available for people on the go



Bring in this coupon to Chili's Shellharbour to receive two free desserts when you purchase two main meals.



Like No Place Else.

Cnr New Lake Entrance Road and Minda Cres, Shellharbour City Centre.

Conditions - One coupon per table per visit. Booking not required.

Cianti's Restaurant and Bar

24 Golf Place, Primbee 2502

Restaurant offers a la carte and table d'hote menus. Function rooms cater for all types of functions 7 days per week.

P 02 4274 7274 **F** 02 4274 6376

E res@fairways.com.au

W www.fairways.com.au

C European

H Breakfast (7 days) & Dinner (Mon-Sat)

\$ Entrees start from: \$6.50
Mains start from: \$17.50
Desserts start from: \$7.00



German Club

636A Northcliffe Drive, Kembla Grange 2506

We are the only German Restaurant in the Illawarra. Try our generously sized meals, you will not be disappointed.

P 02 4271 5011 **F** 02 4271 5884

E germanclub@netspace.net.au

W www.germanclub.net.au

C German

H Wednesday - Sunday, 11am - late, Lunch & Dinner

\$ Entrees start from: \$4.50
Mains start from: \$8.50



Country Kitchen Cafe

10 Addison Street, Shellharbour 2529

Historical cottage, original "old corner store" catering for hearty breakfasts, morning teas, coffees and lunches, specialty seafood. Alfresco seating available.

- P** 02 4296 3205
- E** sallyalex@austarnet.com.au
- C** Home-style cooking, delicious cakes and Turkish breads
- H** 8am to 4pm, 7 days. Breakfast and Lunch
- \$** Entrees start from: \$6.00
Mains start from: \$10.00
Desserts start from: \$5.00
- S** 55 Seats



Cozzies on the Corner Alfresco Cafe

Cnr Addison and Wentworth Streets, Shellharbour Village 2529

Enjoy our relaxed alfresco atmosphere, tantalizing dishes to make your mouth water, fresh juices and great coffee. Take in the ocean and harbour views while dining.

- P** 02 4296 8419
- E** cozzies1@optusnet.com.au
- C** Modern Australian
- H** 7 days, 6am to 4pm. Breakfast, Lunch (all year round) and Dinner (bookings from October)
- \$** Entrees start from: \$4.50
Mains start from: \$7.00
Coffee and cake deal: \$5.00
- S** 36 Seats



esse at the Links

Golf Drive, Shell Cove 2529

Award winning first class restaurant relocated within the clubhouse of an 18 hole, par 71 championship golf course at Shellharbour Links. Stunning views over the Illawarra Escarpment. esse caters for functions, weddings, parties, conferences and seminars. For the information of members and their guests.

P 02 4237 5555

F 02 4239 8622

E esse@primusononline.com.au

W www.shellharbourlinks.com.au

C Modern Australian

H 7 days. Lunch 10am - 3pm
Dinner Thursday - Sunday 6pm-9pm

\$ Entrees start from: \$11.00
Mains start from: \$21.00
Desserts start from: \$9.50

S 65 Seats



Harbour View Thai Restaurant

Shop 4, 7 Addison Street, Shellharbour Village 2529

Authentic Thai cuisine, overlooking the harbour. Small functions available, take-away and home deliveries.

- P** 02 4297 7033
- F** 02 4297 7343
- E** harbourviewthai@hotmail.com.au
- C** Traditional Thai
- H** 11.30am to 2.00pm for Lunch, 5pm to 10pm Dinner
- \$** Entrees start from: \$5.50
Mains start from: \$9.90
Desserts start from: \$4.00
- S** 110 Seats



Hog's Breath Cafe

Cnr Memorial and Minga Drives, Shellharbour City 2529

There are many things we've never done, but we ain't never had too much fun... Hogs Breath Cafe Saloon and Grill - great food, loads of fun.

- P** 02 4295 5305
- F** 02 4295 5282
- E** hbshell@hogsbreath.com.au
- W** www.hogsbreath.com.au
- C** Steak House
- H** 11.30am to 3pm Lunch, 5.30pm to 10.30pm Dinner.
- \$** Entrees start from: \$3.95
Mains start from: \$10.95
Desserts start from: \$7.25
- S** 200 Seats



Kao Gang Thai Restaurant

Shop 1, Lot 10 Memorial Drive, Shellharbour City 2529

Authentic Thai cuisine right in the heart of Shellharbour City Centre.

- P** 02 4297 7888
- F** 02 4297 7888
- C** Thai
- H** 12pm to 2.30pm Monday to Saturday lunch,
5.30pm to 10pm Monday to Sunday dinner.
- \$** Entrees start from: \$6.00
Mains start from: \$13.00
Desserts start from: \$4.00



Lucky Inn Chinese Restaurant

47A Central Avenue, Oak Flats 2529

Come in and try one of the many delicious meals available at the Lucky Inn Chinese Restaurant. With a choice of dine in or take away services.

- P** 02 4256 3350
- C** Cantonese
- H** Tuesday to Sunday 11.30am to 2.30pm lunch,
4.30pm to 9.00pm dinner.
- \$** Entrees start from: \$3.90
Mains start from: \$9.30
Desserts start from: \$2.90



Lysanders Cafe

Shop 223 Stockland Shellharbour, Shellharbour City 2529

Fine coffee, wholesome meals, wine and beer, service and cleanliness, catering for birthdays, special occasions and functions. Est. 1986.

- P** 02 4296 9295 **F** 02 4295 4490
- C** Modern Australian
- H** Monday through Wednesday and Friday 8 am to 5.30pm,
Thursday 8am to 9pm, Saturday 8am to 4pm, Sunday
10am to 4pm. Breakfast, Lunch and Dinner
- \$** Mains start from: \$15.00
Desserts start from: \$3.90
- S** 140 Seats



Ocean Beach Hotel

2 Addison Street, Shellharbour Village 2529

Spectacular seafood, service and ocean views.

P 02 4296 1399

F 02 4297 1486

E obh@bigpond.com.au

W www.oceanbeachhotel.com.au

C Seafood

H Monday to Friday 12 noon to 2.30 pm and 6 pm to 8.30 pm,
Saturday and Sunday 12 noon to 3 pm and 6 pm till late.
Lunch and Dinner

\$ Entrees start from: \$11.00

Mains start from: \$17.50

Desserts start from: \$9.90

S 170 Seats



Relish on Addison

Shop 1, 30A Addison Street, Shellharbour Village 2529

An award winning, unique dining experience. Come in for a meal or join us for a coffee and dessert.

P 02 4295 5191 **F** 02 4295 5191

E lawsloo@ozemail.com.au

C Modern Australian with Mediterranean influence

H Tuesday to Sunday 8.30am to 9pm (last orders).
Breakfast, Lunch and Dinner

\$ Entrees start from: \$6.50

Mains start from: \$17.50

Desserts start from: \$4.50



Tullimbah Inn

Tongarra Road, Albion Park 2527

Tullimbah Inn is a medium sized restaurant with a young energetic team who will make your dining experience special every time. High quality innovative menu.

P 02 4257 1270 **F** 02 4257 1653

E tullimbahinn@optusnet.com.au

C Modern Australian

H Wed - Sat 11.30am - 2pm & 6pm - 10.30pm, Sun
11am - 2pm. Lunch & dinner

\$ Entrees start from: \$7.90

Mains start from: \$19.90

Desserts start from: \$5.00



We like having you here in our neighbourhood.

Whether you are looking to add a fresh look to your wardrobe, find a groovy gift or brighten your home, Stockland Shellharbour is the answer. With over 100 specialty stores like Surf Dive 'N' Ski, Just Jeans, Colorado plus Target, Kmart, Coles, Bi-Lo and Best & Less, you're sure to find what you need on every visit.

And here are just a few things that make shopping at Stockland Shellharbour easier for you:

The Customer Care Centre provides a range of free services including directions to store locations, gift vouchers, bus timetables, taxi bookings, free parcel minding and the free use of mobility equipment.

With our well equipped parents rooms, free stroller hire and specially designed shopping trolleys that look just like friendly dinosaurs, available from the Customer Care Centre, shopping with children is easy at Stockland Shellharbour.

Struggling to find the right gift? With so many stores, you can't go wrong with a Stockland Gift voucher. From as little as \$10, they're the perfect gift every time and they are available from the Customer Care Centre.



TRADING HOURS

Monday - Wednesday	9:00am to 5:30pm
Thursday	9:00am to 8:00pm
Friday	9:00am to 5:30pm
Saturday	9:00am to 4:00pm
Sunday	10:00am to 4:00pm
Public Holidays	10:00am to 4:00pm



Stockland
SHELLHARBOUR

Target. Kmart. coles. BI-LO. BEST & LESS

LAKE ENTRANCE ROAD, SHELLHARBOUR CITY
TELEPHONE 4294 8264 • FACSIMILE 4296 1906

www.stockland.com.au

breakfast on the balcony
on Sunday's from 8:30am



snax on the tiles
every night till late



Galley Brasserie
Lunch on the Balcony



Shellharbour Workers' Club
Cnr Wattle & Shellharbour Rds.
Shellharbour 2529 Ph: 4296 7155
For the information of members & their guests

Galley Brasserie Dinner



Cafe 92 Mare' Italian Restaurant



GOLDRUSH CHINESE RESTAURANT



Shellharbour Workers' Club
Cnr Wattle & Shellharbour Rds.
Shellharbour 2529 Ph: 4296 7155
www.shellys.com.au

For the information of members & their guests

Tongarra Restaurant

147 Tongarra Road, Albion Park 2527

Modern colonial influence, modern Australian/Italian cuisine.

- P** 02 4257 4200 **F** 02 4257 4204
- C** Modern Australian/Italian
- H** Monday to Friday 11.30am to 2pm, Monday to Sunday 6pm till late. Lunch and Dinner
- \$** Entrees start from: \$8.00
Mains start from: \$18.00
Desserts start from: \$9.00
- S** 120 Seats



Warilla Bowls and Recreation Club

Jason Avenue, Barrack Heights 2528

Emeralds Restaurant – a la carte, table d’hote, fine dining.
Seaview Chinese Restaurant – smorgasbord, Chinese and Australian cuisine.
Diamonds Reception Centre – can make your dream wedding complete.
Greenside Coffee Shop – sandwiches, snacks, light meals and coffees.
Free Entertainment – Thursday to Sunday nights.

- P** 02 4295 1811
- F** 02 4297 1927
- E** office@warillabowls.com.au
- W** www.warillabowls.com.au
- H** Tues to Friday and Sunday 12noon to 2.30pm,
Tuesday to Saturday from 6pm. Lunch and Dinner
- \$** Entrees start from: \$8.90
Mains start from: \$14.90
Desserts start from: \$8.00
- S** 80 for Emeralds Restaurant plus private dining area for 25, 150 for Seaview Chinese Restaurant.



Yallah Woolshed

Princes Highway, Yallah

The famous Yallah Woolshed is the Illawarra's most popular live music venue and restaurant. A must for all visitors to the region.

- P** 02 4262 2655
- F** 02 4262 2655
- E** info@yallahwoolshed.com.au
- W** www.yallahwoolshed.com.au
- C** Australian
- H** Tuesday to Saturday. Lunch and Dinner
- \$** Entrees start from: \$7.00
Mains start from: \$8.50
Desserts start from: \$5.50
- S** 650 Seats



Map Reference

A.G.A Club Germania (Pg 7)	
Addisons Seafood Grill & Bar (Pg 5)	Q15
Arona's Restaurant (Pg 6)	Q15
Branches Restaurant (Pg 6)	P14
Cake Biz (Pg 6)	M12
Chilis (Pg 7)	M12
Cianti's Restaurant & Bar (Pg 7)	R1
Country Kitchen Café (Pg 8)	Q15
Cozzies On The Corner Alfresco Café (Pg 8)	Q15
esse at the Links (Pg 9)	O19
Harbour View Thai Restaurant (Pg 10)	R15
Hog's Breath Café (Pg 10)	M12
Kao Gang Thai Restaurant (Pg 11)	M12
Lucky Inn Chinese Restaurant (Pg 11)	J12
Lysanders Café (Pg 11)	M12
Ocean Beach Hotel (Pg 12)	R15
Relish on Addison (Pg 12)	Q15
Shellharbour Workers Club (Pg 14-15)	P16
Stockland Shellharbour (Pg 13)	M12
Tongarra Restaurant (Pg 16)	D13
Tullimbah Inn (Pg 12)	A14
Warilla Bowls & Recreation Club (Pg 16)	Q11
Yallah Woolshed (Pg 17)	F4